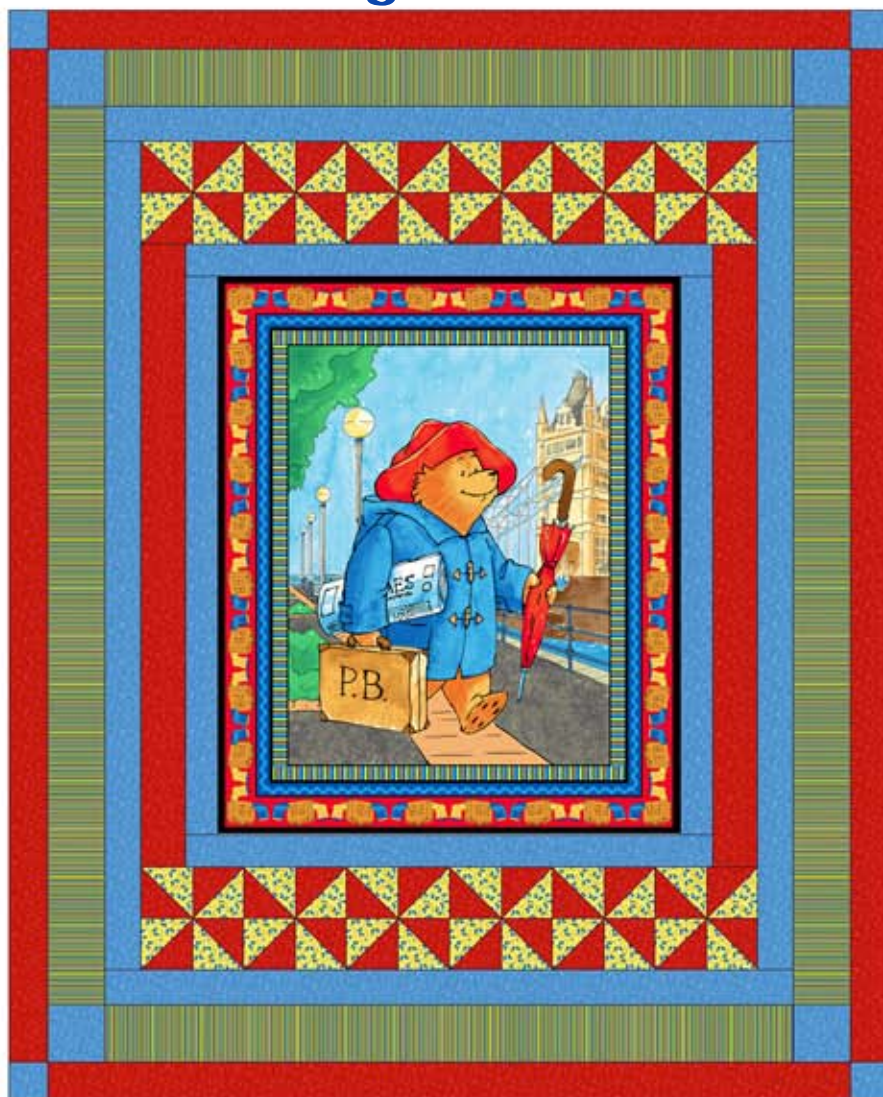


## Paddington's Travels

©Paddington & Co. 2009



Finished size: 68½" x 85"



20984 RB 1 panel



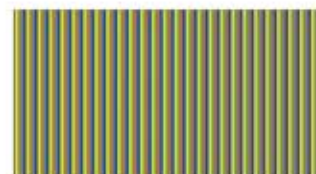
20517 B 2⅝ yards



20517 R 2¼ yards



20516 SB 5⅜ yards



20407 YG 1⅜ yards

**Paddington's Travels**  
Designed by: **Phyllis Dobbs**  
Skill Level: **Beginner**

**CUTTING:**

**20984 RB** – 1 panel

**20516 SB** – Cut 3 strips 4 7/8" x width of fabric (WOF). Subcut into 24 blocks 4 7/8" square. Subcut diagonally for 48 half square triangles (HST). Set aside remainder for backing.

**20517 B** – Cut 2 strips 65" x 3 1/4", 54" x 3 1/4", 2 strips 44" x 3", and 2 strips 41 1/2" x 3". Cut 1 strip 5" x 20" and subcut into 4 blocks 5" square. Cut 1 strip 3 1/2" x 14" and subcut into 4 blocks 3 1/2" square. Set aside remainder for binding.

**20517 R** – Cut 2 strips 79 1/2" x 3 1/2", 2 strips 63" x 3 1/2", and 2 strips 49" x 4". Cut 3 strips 4 7/8" x WOF. Subcut into 24 blocks 4 7/8" square. Subcut diagonally for 48 HST's.

**20407 YG** – Cut 7 strips 5" by WOF. Sew strips together to make 1 long strip. Subcut 2 strips 70 1/2" x 5" and 2 strips 54" x 5".

**SEWING:**

*Sew 1/4" seams and press seams to the darker fabric as you sew. This quilt is constructed starting with the center panel and adding strips outward.*

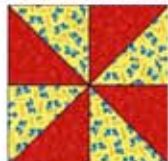
1. **Sew 2 pinwheel block strips and set aside.** Sew a yellow HST to a red HST and repeat to make 48.



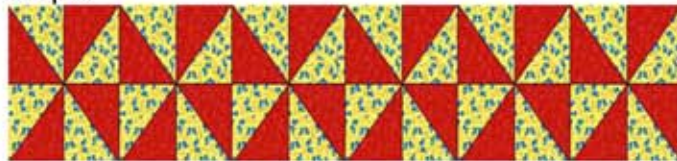
Sew a HST block to another block to make 24 units.



Sew the units together to make 12 blocks.



Sew 6 blocks together and repeat to make 2 strips.



2. Sew the two 44" blue strips to the side edges of the panel. Sew the two 41 1/2" blue strips to the top and bottom edges.

3. Sew the 4" wide red strips to the side edges. Sew the pinwheel strips to the top and bottom edges.

4. Sew the 65" long blue strips to the side edges and sew the 54" long blue strips to the top and bottom edges.

5. Sew the 70 1/2" long stripe strips to the side edges. Sew a 5" blue block to the each end of the 54" long stripe strips and sew these to the top and bottom edges.

6. Sew the 79 1/2" long red strips to the side edges. Sew the 3 1/2" blue blocks to each end of the 63" long red strips and sew these to the top and bottom edges.

7. Quilt and bind as desired.

*While all possible care has been taken to assure the accuracy of this pattern, we are not responsible for printing errors or the way in which individual work*