



QUILT IS A 50" CIRCLE

# Freebird

*moda*

BY M<sup>o</sup>M<sup>o</sup>

# Freebird BY MOMO

Finished Size: 50" round

## Fabric Requirements:

20 Assorted Prints: fat quarter of each (18"x 22")  
 Center: one fat quarter (18"x 22")  
 Bird appliqués: one fat quarter (18"x 22")  
 Brown Accent & Binding: one yard  
 Green Accent: ¾ yard  
 Backing: 3¼ yards

## Fabric cutting, fabric skus, and strip sets:



**Center** (32240-18):  
one circle from template



**Brown accent** (32245-19):  
5-1¾"x WOF strips  
subcut 10-1¾"x 22" strips



**Green accent** (32246-14):  
5-3½"x WOF strips  
subcut 10-3½"x 22" strips



**Bird appliqués** (32246-18):  
birds from templates

## Assorted Prints:

| Strip set | from EACH Print cut: 1-6½"x 22" strip | from EACH Print cut: 1-10¾"x 22" strip |
|-----------|---------------------------------------|--|
| #1        | 32241-13                              | 32242-11                               |
| #2        | 32241-16                              | 32242-24                               |
| #3        | 32244-25                              | 32242-22                               |
| #4        | 32247-22                              | 32244-15                               |
| #5        | 32243-22                              | 32247-15                               |
| #6        | 32244-13                              | 32247-13                               |
| #7        | 32243-13                              | 32247-18                               |
| #8        | 32243-16                              | 32241-11                               |
| #9        | 32242-14                              | 32241-19                               |
|           | 32242-18                              | 32241-18                               |

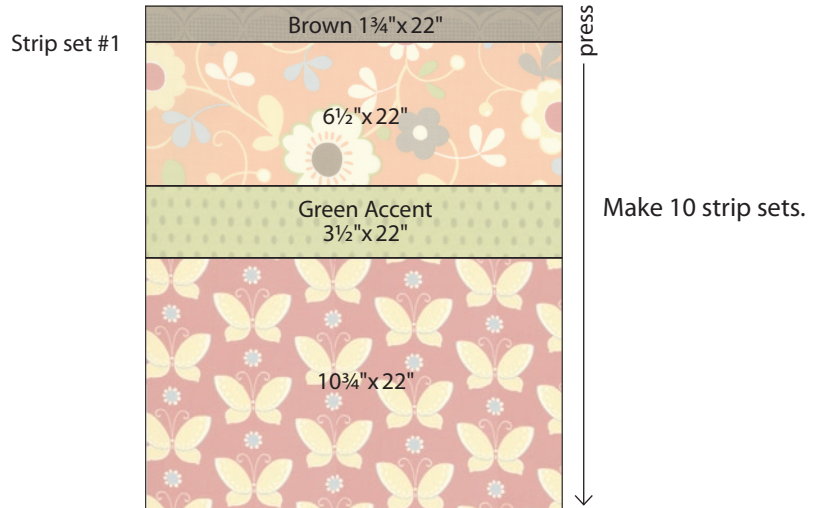
## Quilter Basics

Read instructions before beginning a project. All instructions include a ¼" seam allowance. 22" measurement is approximate. WOF" –approximately 40".

\*\*\*Ruler: This quilt is made using the 25" – 9 Degree Circle Wedge Ruler by Marilyn Doheny

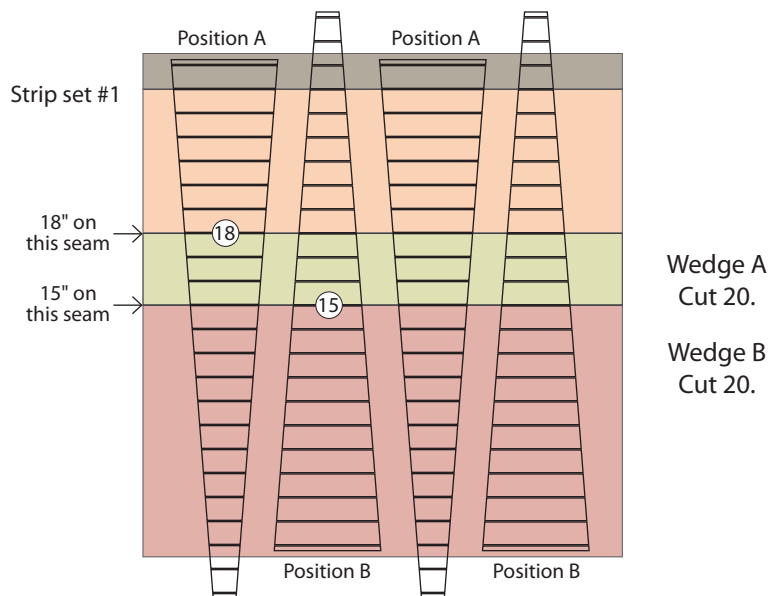
## Construction

**1 Sew the Strip Sets:** Combine 1-1¾"x 22" Brown Accent strip, 1-6½"x 22" Print strip, 1-3½"x 22" Green Accent strip and 1-10¾"x 22" Print strip. See diagram. Refer to the chart to for the Print combinations. Make 10 strip sets.



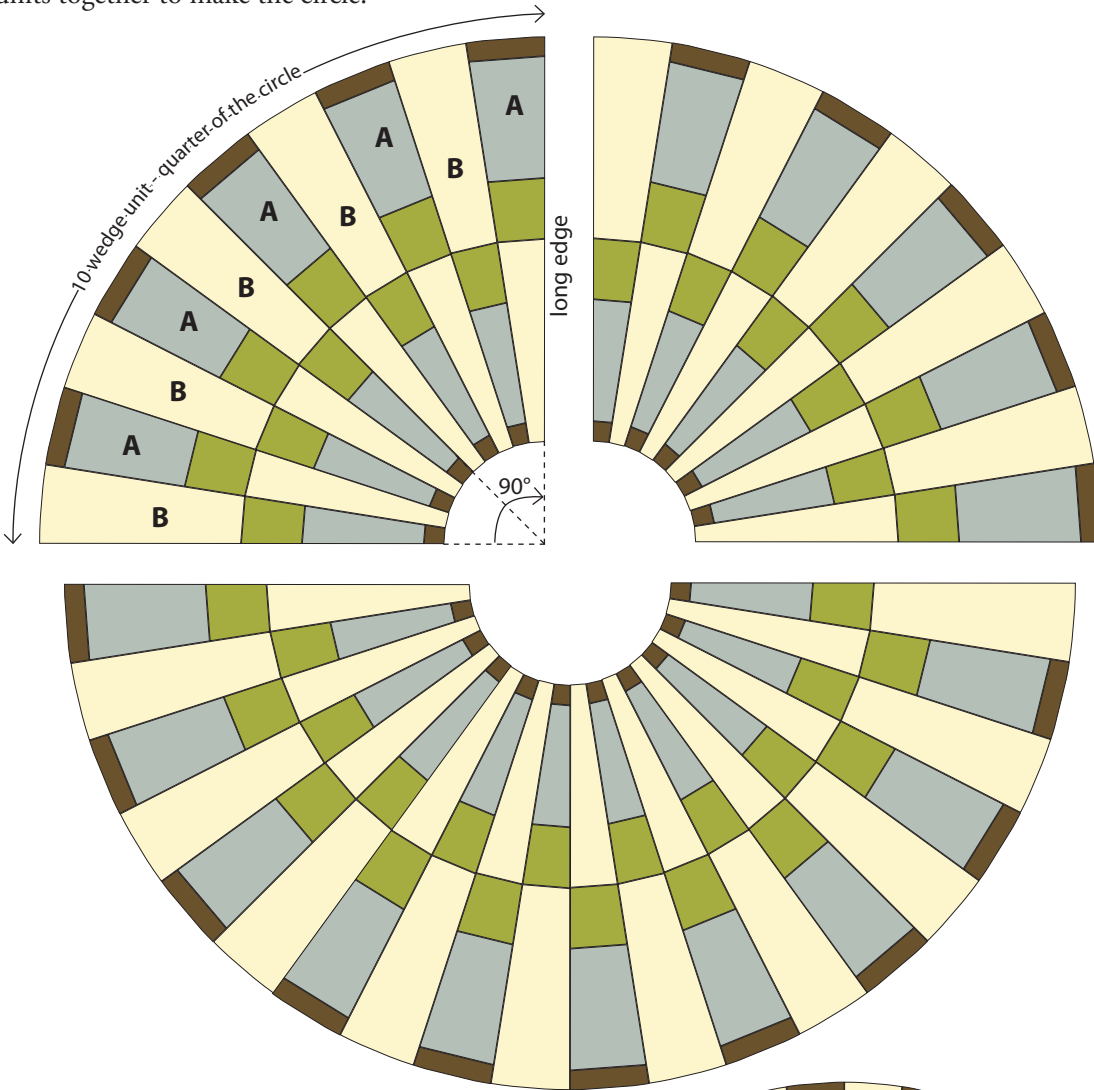
*moda*

**2 Cut the Wedges:** Cut each Strip Set into 4 wedges. Align the 18" line on the ruler on the seam shown, when the ruler is in position A. Align the 15" line on the ruler on the seam shown, when the ruler is in position B. Alternate the position of the ruler when cutting the wedges. Cut 2 wedges in position A (Wedge A) and 2 wedges in position B (Wedge B). Repeat with each of the 10 strip sets. Cut a total of 20 A Wedges and 20 B Wedges.

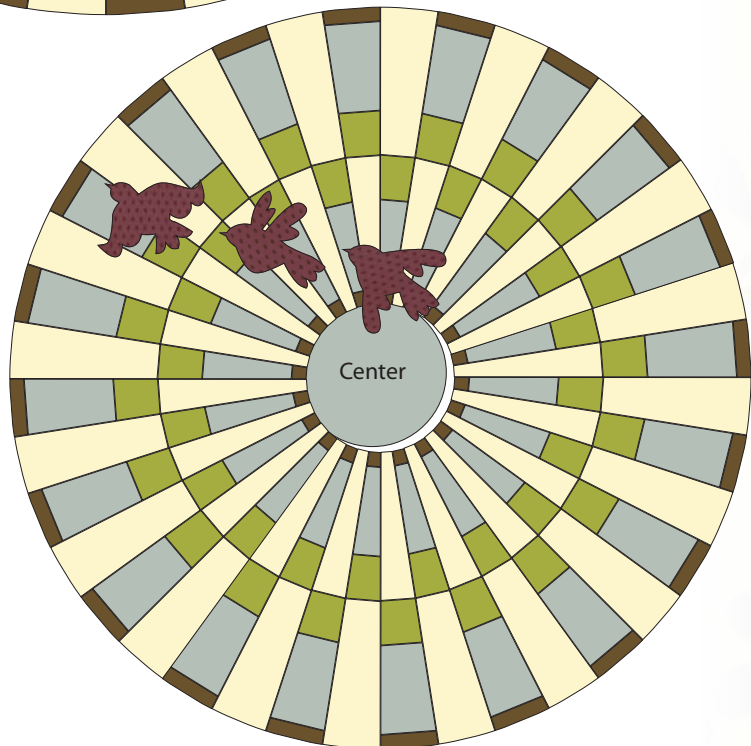


## Assemble Quilt

- 3 Sew the quilt top in 10 wedge units alternating the A & B Wedges, to form a quarter of the circle. Press. Check the long edges of the 10 wedge unit to make sure they are form a 90° angle and are straight. Sew the 4 wedge units together to make the circle.



- 4 Use your appliqué method of choice to add the Center circle and Bird appliqués to the quilt top. Layer, quilt and use bias binding to bind. ENJOY!



*moda*

center line of circle

**Freebird**  
10" circle template  
Does not include seam allowance

**Freebird**  
Bird templates  
Does not include seam allowance

